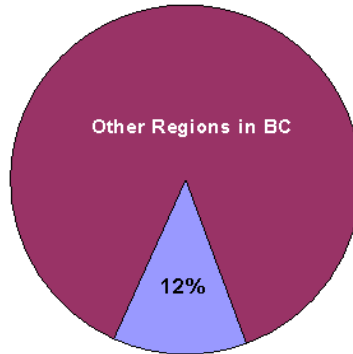
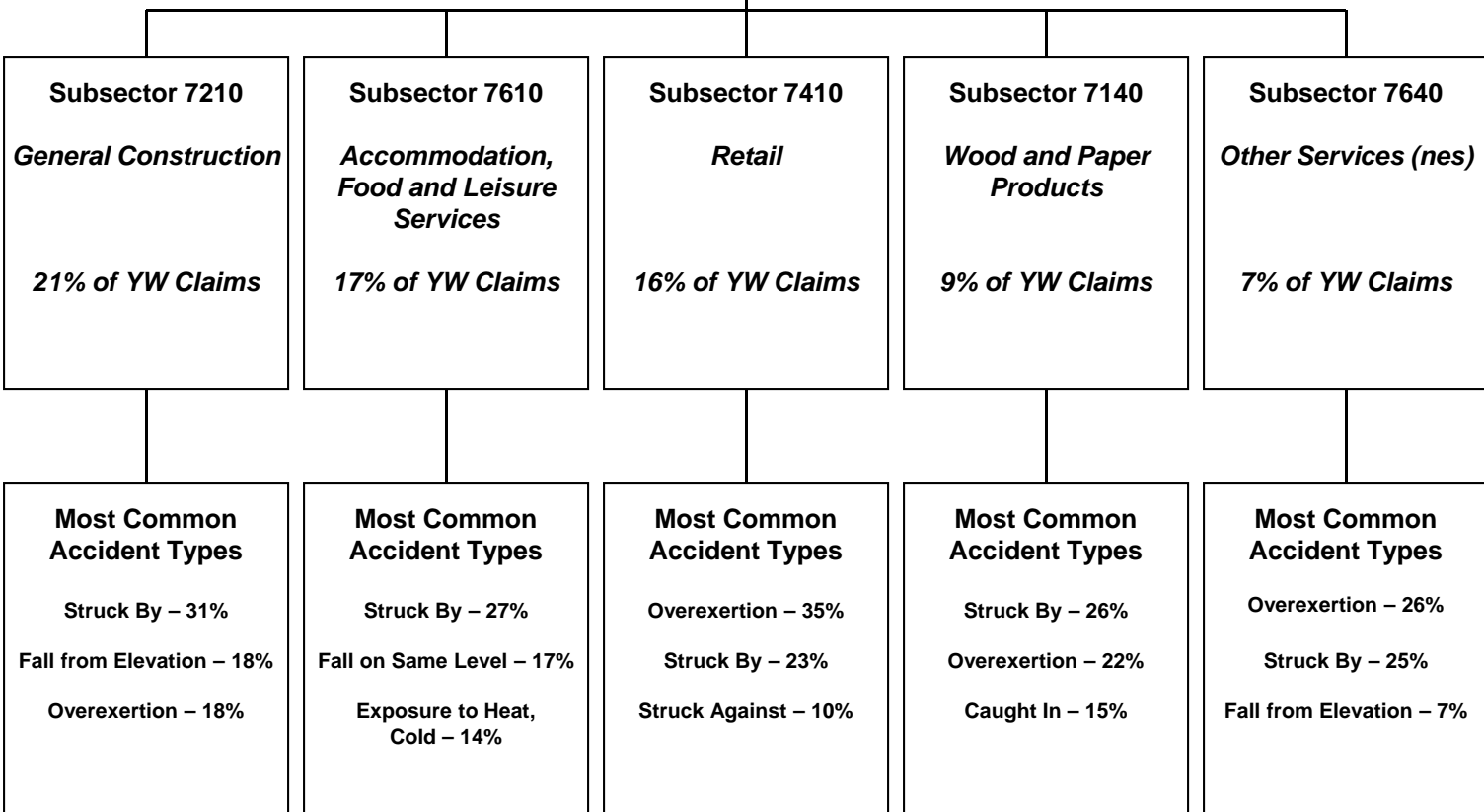


# Interior

## Young Worker (Age 15-24) Claim Hierarchy Tree



**Interior (2004-2008)**  
6,396 Young Worker Time-Loss Claims



**Within the Most Common Accident Types shown above:**

- “Struck By” represents specific accident types that include “Struck by Falling Object” and “Struck by Slipping Handheld Object”, among others.
- “Overexertion” represents specific accident types that include “Overexertion in Lifting” and “Overexertion in Pulling, Pushing Objects”, among others.
- “Caught In” represents specific accident types that include “Caught in, Compressed by Equipment, Objects, NEC” and “Caught in Running Equipment or Machinery”, among others.

Note: The Interior includes Kelowna, Nelson, and Cranbrook regions.

Subsectors shown above are the top 5 based on a ranking of young worker time-loss claims volume between 2004 and 2008 for the region.

# Interior

## Young Worker (Age 15-24) Fact Sheet

### Young Worker Time-Loss Claims Accepted Between 2004 and 2008 – Interior

- In the Interior, approximately 74% of young worker time-loss claims accepted between 2004 and 2008 relate to males.

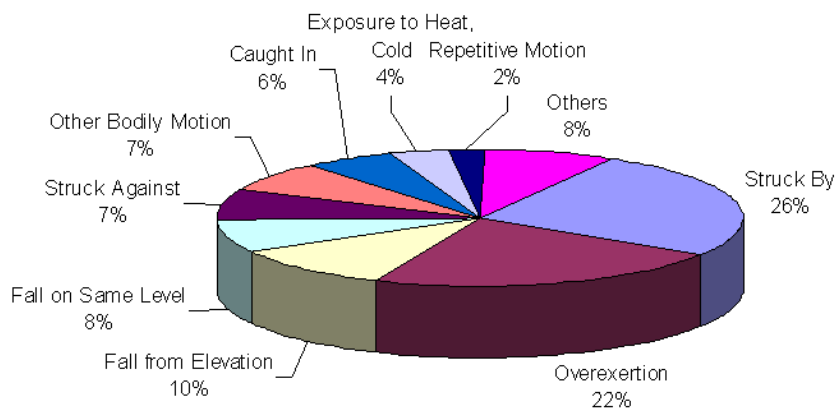
	2004	2005	2006	2007	2008	2004-2008	2004-2008 % of YW for Region
Female - Age 15-24	257	302	354	384	351	1,648	26%
Male - Age 15-24	776	937	1,052	1,049	901	4,715	74%
Unspecified - Age 15-24	1		4	1	27	33	
<b>Total - Age 15-24</b>	<b>1,034</b>	<b>1,239</b>	<b>1,410</b>	<b>1,434</b>	<b>1,279</b>	<b>6,396</b>	<b>100%</b>

### Young Worker Claim Costs and Days Lost – Interior

- Between 2004 and 2008, approximately \$35,363,000 in claim costs were paid relating to young worker claims for the Interior, regardless of the year of injury.
- Between 2004 and 2008, approximately 136,400 work days were lost for young worker claims in the Interior, regardless of the year of injury.

### Young Worker Claim Characteristics – Interior Overall

**Top Accidents in Interior Region (2004-2008)**



**Top Injury Types in Interior Region (2004-2008)**

