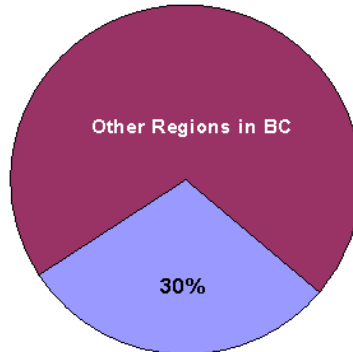
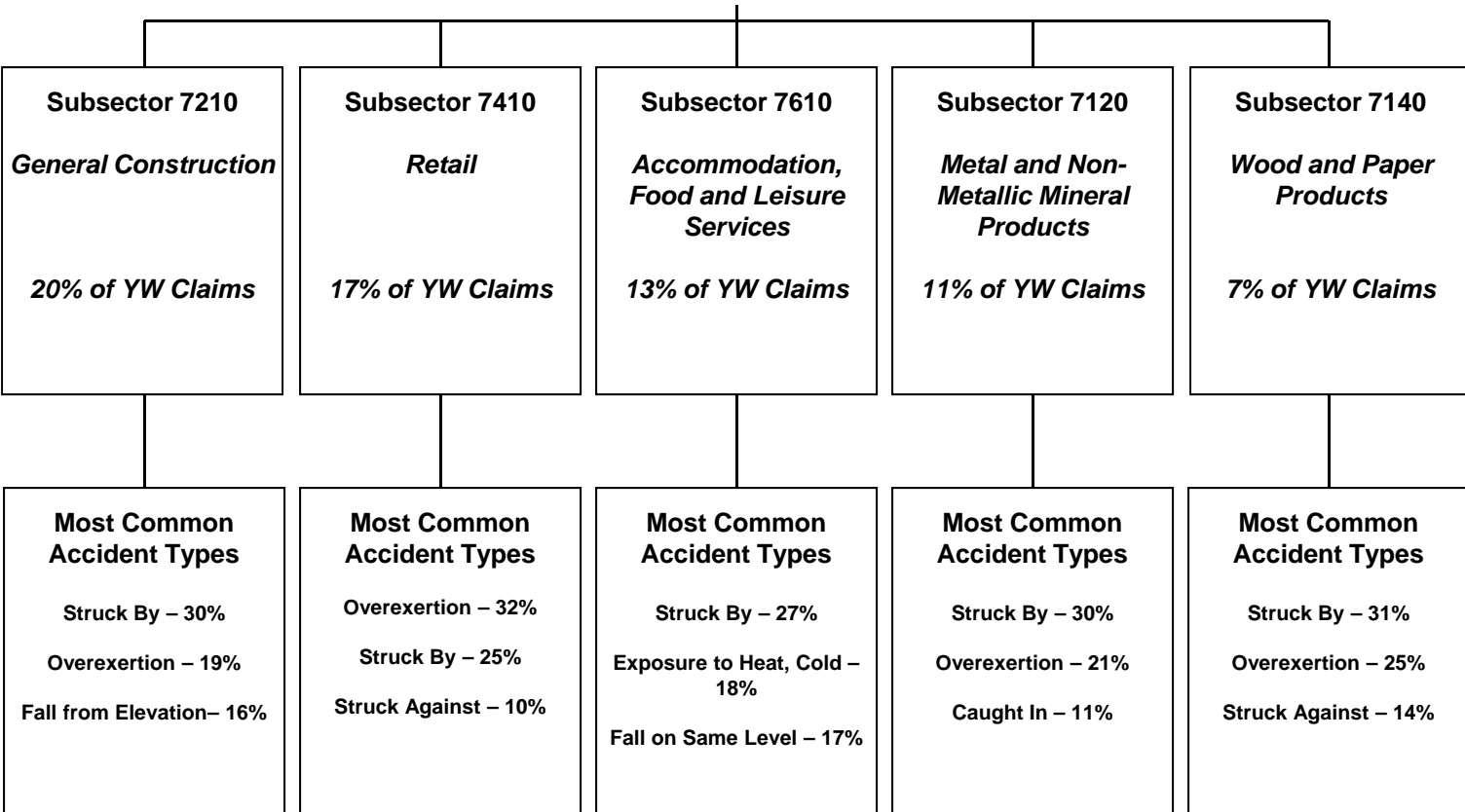


Fraser Valley

Young Worker (Age 15-24) Claim Hierarchy Tree



Fraser Valley (2004-2008)
15,618 Young Worker Time-Loss Claims



Within the Most Common Accident Types shown above:

- “Struck By” represents specific accident types that include “Struck by Falling Object” and “Struck by Slipping Handheld Object”, among others.
- “Overexertion” represents specific accident types that include “Overexertion in Lifting” and “Overexertion in Pulling, Pushing Objects”, among others.
- “Caught In” represents specific accident types that include “Caught in, Compressed by Equipment, Objects, NEC” and “Caught in Running Equipment or Machinery”, among others.

Note: Fraser Valley includes Surrey, Langley, Coquitlam and Abbotsford regions.

Subsectors shown above are the top 5 based on a ranking of young worker time-loss claims volume between 2004 and 2008 for the region.

Fraser Valley

Young Worker (Age 15-24) Fact Sheet

Young Worker Time-Loss Claims Accepted Between 2004 and 2008 – Fraser Valley

- In the Fraser Valley, approximately 77% of young worker time-loss claims accepted between 2004 and 2008 relate to males.

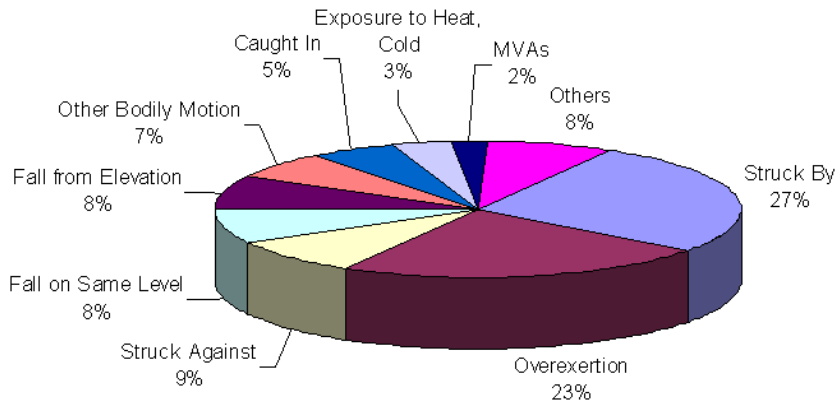
	2004	2005	2006	2007	2008	2004-2008	2004-2008 % of YW for Region
Female - Age 15-24	624	736	684	810	732	3,586	23%
Male - Age 15-24	2,165	2,438	2,561	2,571	2,232	11,967	77%
Unspecified - Age 15-24	3	1	8	9	44	65	
Total - Age 15-24	2,792	3,175	3,253	3,390	3,008	15,618	100%

Young Worker Claim Costs and Days Lost – Fraser Valley

- Between 2004 and 2008, approximately \$71,318,000 in claim costs were paid relating to young worker claims for the Fraser Valley, regardless of the year of injury.
- Between 2004 and 2008, approximately 340,300 work days were lost for young worker claims in the Fraser Valley, regardless of the year of injury.

Young Worker Claim Characteristics – Fraser Valley Overall

Top Accidents in Fraser Valley Region (2004-2008)



Top Injury Types in Fraser Valley Region (2004-2008)

