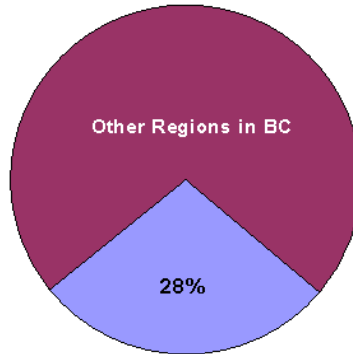
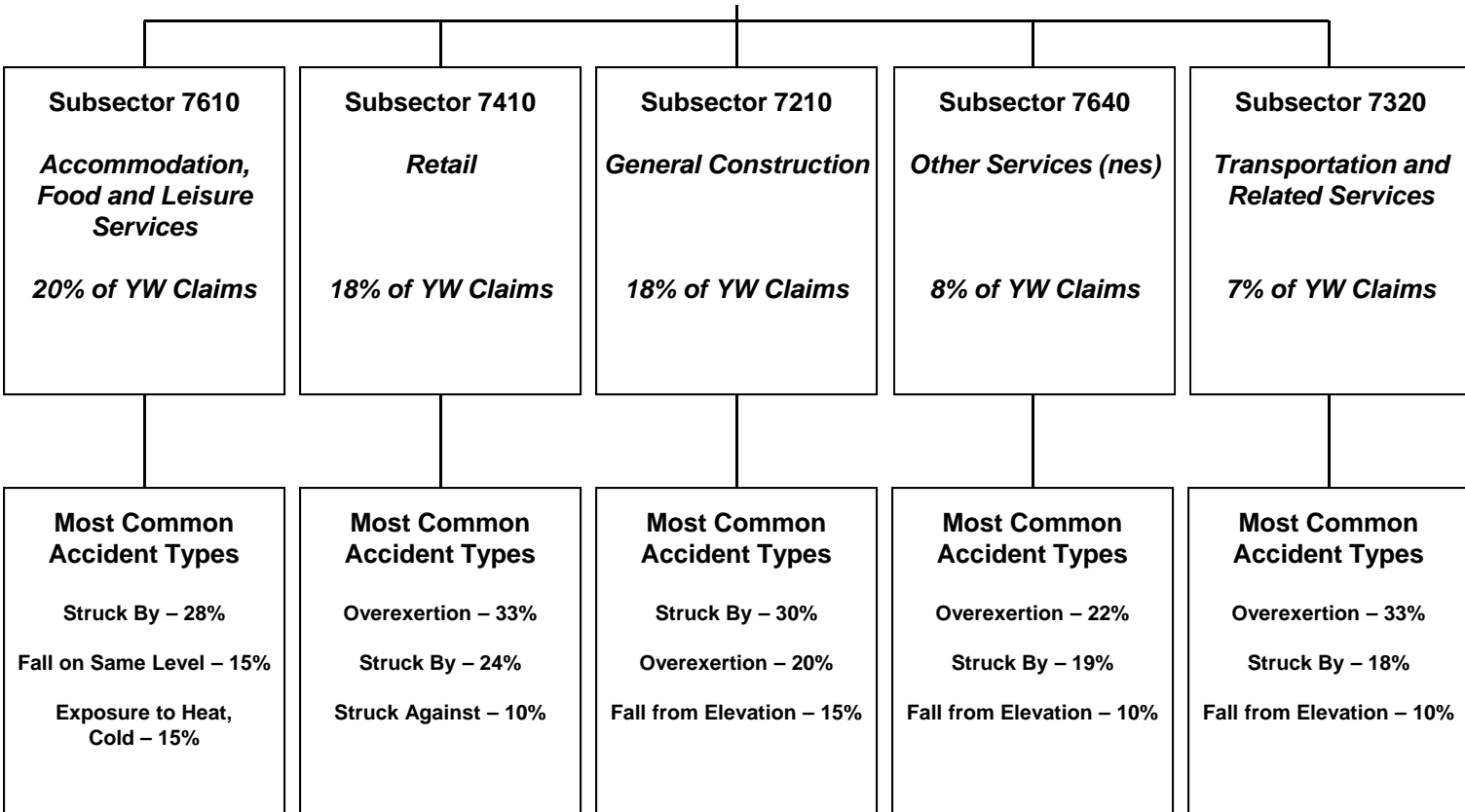


Greater Vancouver Young Worker (Age 15-24) Claim Hierarchy Tree



Greater Vancouver (2004-2008)
14,801 Young Worker Time-Loss Claims



Within the Most Common Accident Types shown above:

- “Struck By” represents specific accident types that include “Struck by Falling Object” and “Struck by Slipping Handheld Object”, among others.
- “Overexertion” represents specific accident types that include “Overexertion in Lifting” and “Overexertion in Pulling, Pushing Objects”, among others.
- “Fall from Elevation” represents specific accident types that include “Fall/Jump to Lower Level, NEC” and “Fall from Ladder/Steps & Stairs”, among others.

Note: Greater Vancouver includes Vancouver, North Vancouver, Burnaby, New Westminster, Richmond, and Delta.

Subsectors shown above are the top 5 based on a ranking of young worker time-loss claims volume between 2004 and 2008 for the region.

Greater Vancouver

Young Worker (Age 15-24) Fact Sheet

Young Worker Time-Loss Claims Accepted Between 2004 and 2008 – Greater Vancouver

- In Greater Vancouver, approximately 75% of young worker time-loss claims accepted between 2004 and 2008 relate to males.

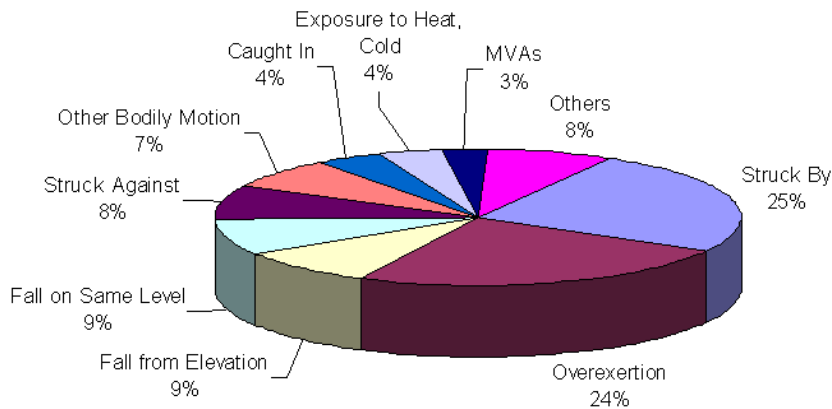
	2004	2005	2006	2007	2008	2004-2008	2004-2008 % of YW for Region
Female - Age 15-24	731	700	756	792	739	3,718	25%
Male - Age 15-24	2,092	2,165	2,174	2,337	2,262	11,030	75%
Unspecified - Age 15-24	1	3	5	2	42	53	
Total - Age 15-24	2,824	2,868	2,935	3,131	3,043	14,801	100%

Young Worker Claim Costs and Days Lost – Greater Vancouver

- Between 2004 and 2008, approximately \$84,142,000 in claim costs were paid relating to young worker claims for Greater Vancouver, regardless of the year of injury.
- Between 2004 and 2008, approximately 358,700 work days were lost for young worker claims in Greater Vancouver, regardless of the year of injury.

Young Worker Claim Characteristics – Greater Vancouver Overall

Top Accidents in Greater Vancouver Region (2004-2008)



Top Injury Types in Greater Vancouver Region (2004-2008)

