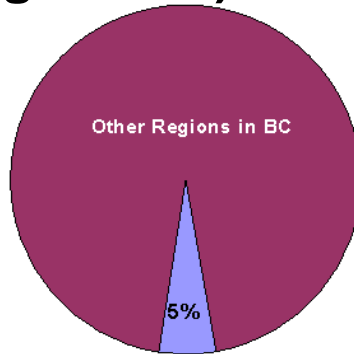
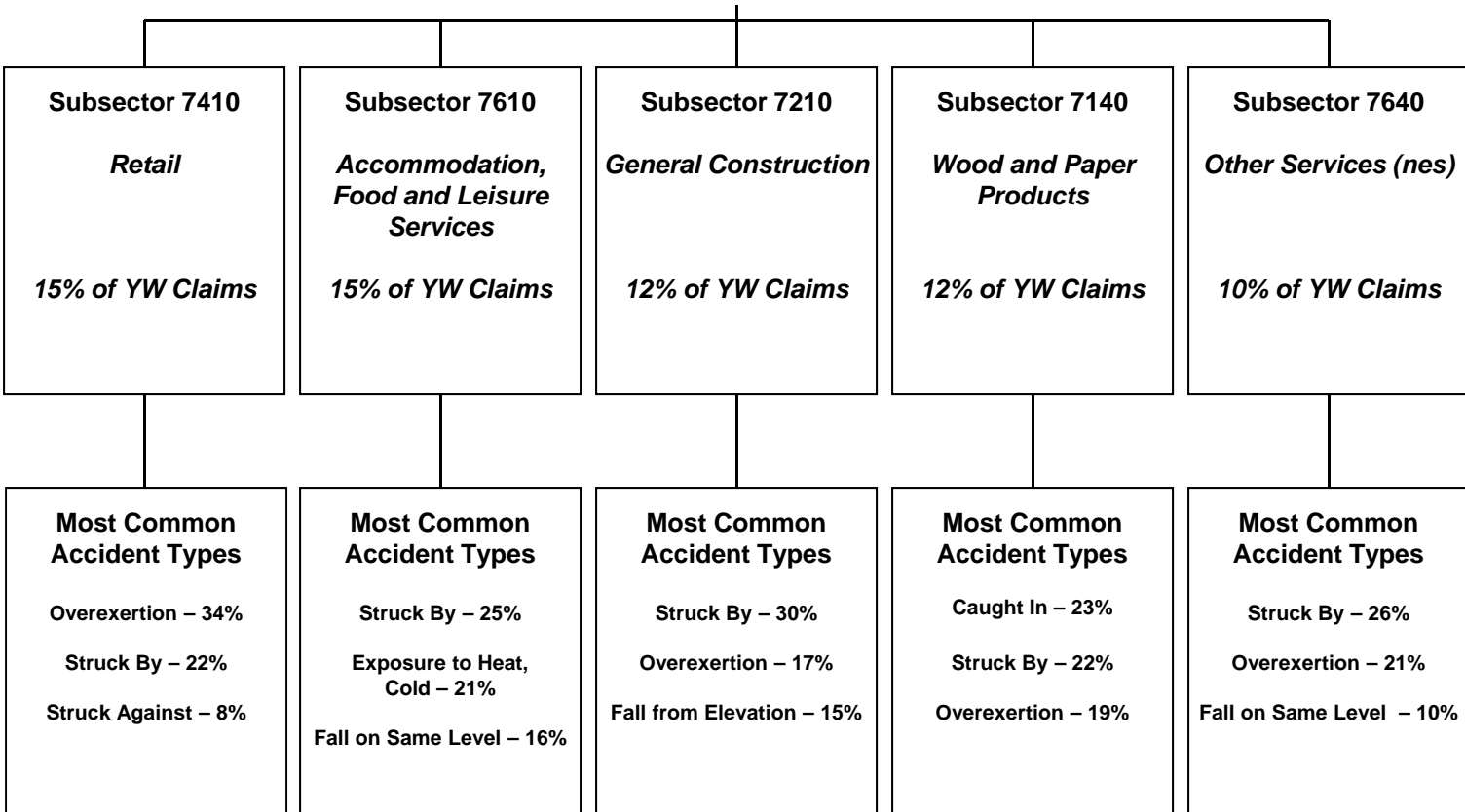


Prince George & North Young Worker (Age 15-24) Claim Hierarchy Tree



Prince George & North (2004-2008)
2,803 Young Worker Time-Loss Claims



Within the Most Common Accident Types shown above:

- “Struck By” represents specific accident types that include “Struck by Falling Object” and “Struck by Slipping Handheld Object”, among others.
- “Overexertion” represents specific accident types that include “Overexertion in Lifting” and “Overexertion in Pulling, Pushing Objects”, among others.
- “Caught In” represents specific accident types that include “Caught in, Compressed by Equipment, Objects, NEC” and “Caught in Running Equipment or Machinery”, among others.

Note: Prince George & North includes Prince George, Fort St. John, and Terrace regions.

Subsectors shown above are the top 5 based on a ranking of young worker time-loss claims volume between 2004 and 2008 for the region.

Prepared by: Risk Management, April 2009

Data Source: WorkSafeBC Data Warehouse as of March 2009

Prince George & North Young Worker (Age 15-24) Fact Sheet

Young Worker Time-Loss Claims Accepted Between 2004 and 2008 – Prince George & North

- In Prince George & North, approximately 75% of young worker time-loss claims accepted between 2004 and 2008 relate to males.

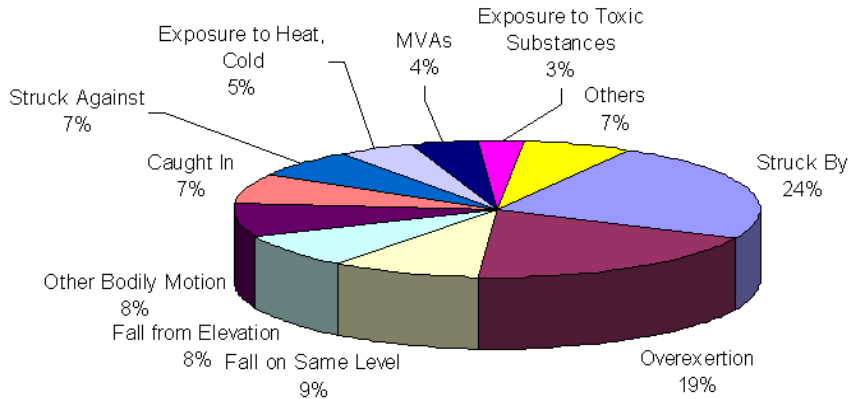
	2004	2005	2006	2007	2008	2004-2008	2004-2008 % of YW for Region
Female - Age 15-24	131	153	152	136	165	737	25%
Male - Age 15-24	407	455	446	391	354	2,053	75%
Unspecified - Age 15-24	1	1	2	1	8	13	
Total - Age 15-24	539	609	600	528	527	2,803	100%

Young Worker Claim Costs and Days Lost – Prince George & North

- Between 2004 and 2008, approximately \$31,702,000 in claim costs were paid relating to young worker claims for Prince George & North, regardless of the year of injury.
- Between 2004 and 2008, approximately 83,000 work days were lost for young worker claims in Prince George & North, regardless of the year of injury.

Young Worker Claim Characteristics – Prince George & North Overall

Top Accidents in Prince George & North Region (2004-2008)



Top Injury Types in Prince George & North Region (2004-2008)

