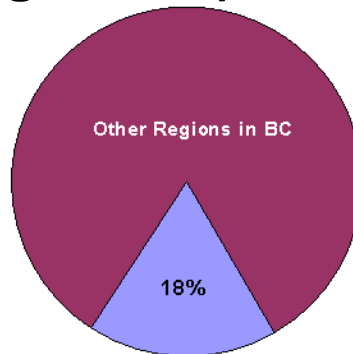
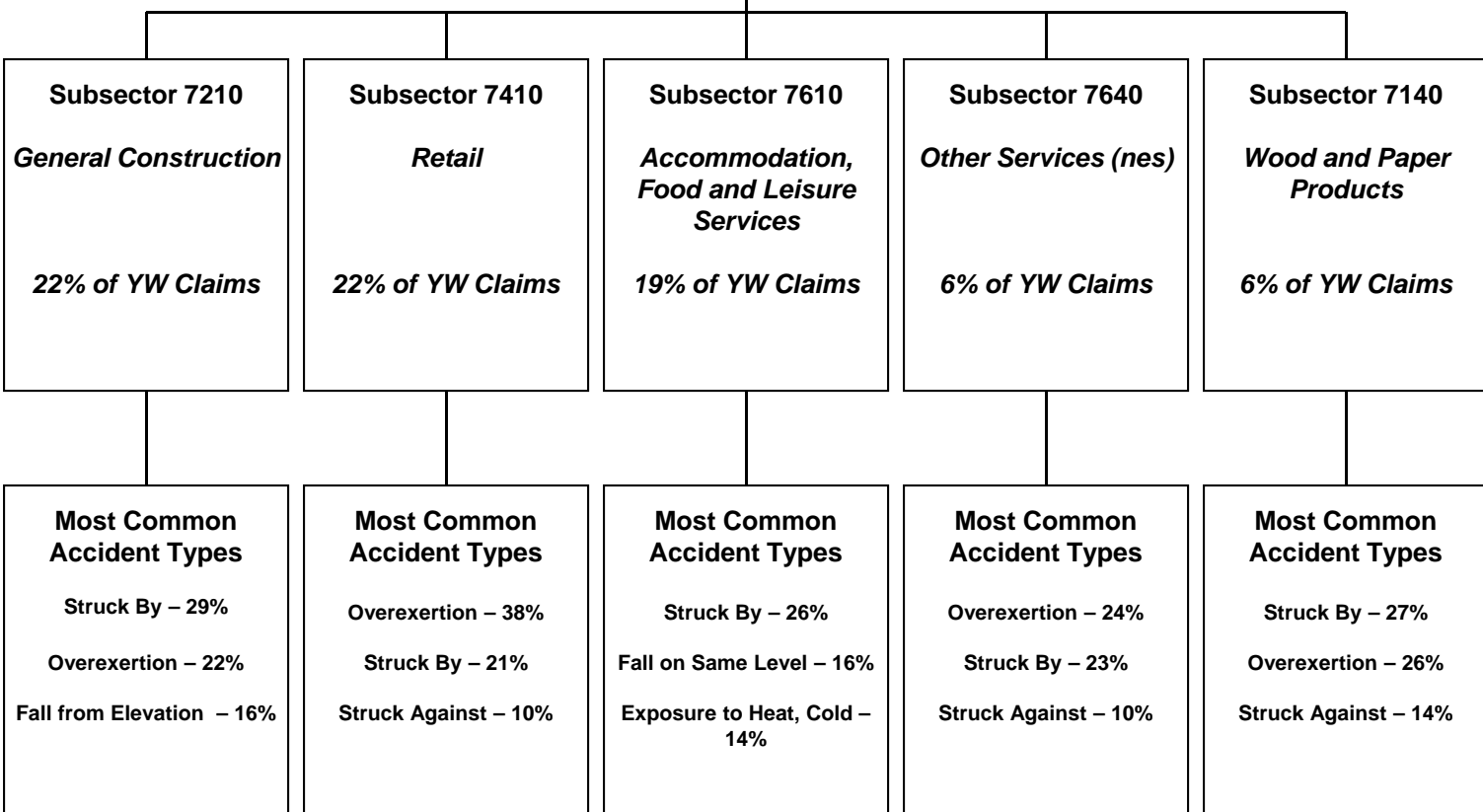


Vancouver Island Young Worker (Age 15-24) Claim Hierarchy Tree



Vancouver Island (2004-2008)
9,232 Young Worker Time-Loss Claims



Within the Most Common Accident Types shown above:

- “Struck By” represents specific accident types that include “Struck by Falling Object” and “Struck by Slipping Handheld Object”, among others.
- “Overexertion” represents specific accident types that include “Overexertion in Lifting” and “Overexertion in Pulling, Pushing Objects”, among others.
- “Fall from Elevation” represents specific accident types that include “Fall/Jump to Lower Level, NEC” and “Fall from Ladder/Steps & Stairs”, among others.

Note: Vancouver Island includes Victoria, Nanaimo and Courtenay regions.

Subsectors shown above are the top 5 based on a ranking of young worker time-loss claims volume between 2004 and 2008 for the region.

Vancouver Island

Young Worker (Age 15-24) Fact Sheet

Young Worker Time-Loss Claims Accepted Between 2004 and 2008 – Vancouver Island

- In Vancouver Island, approximately 70% of young worker time-loss claims accepted between 2004 and 2008 relate to males.

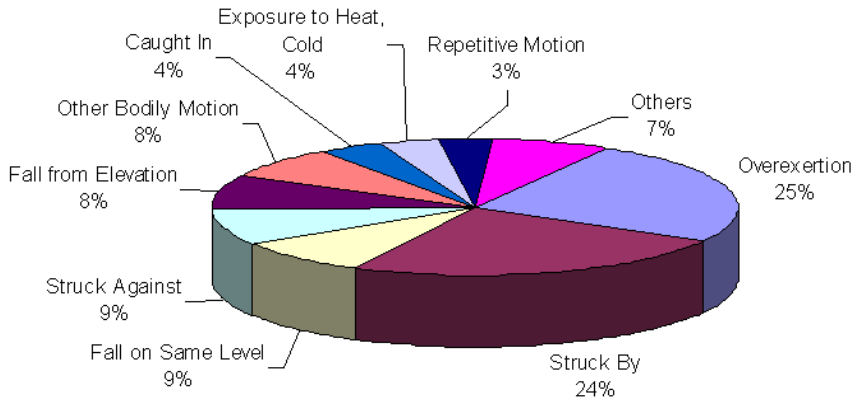
	2004	2005	2006	2007	2008	2004-2008	2004-2008 % of YW for Region
Female - Age 15-24	448	482	569	653	633	2,785	30%
Male - Age 15-24	1,150	1,175	1,321	1,420	1,347	6,413	70%
Unspecified - Age 15-24	2		4	2	26	34	
Total - Age 15-24	1,600	1,657	1,894	2,075	2,006	9,232	100%

Young Worker Claim Costs and Days Lost – Vancouver Island

- Between 2004 and 2008, approximately \$45,507,000 in claim costs were paid relating to young worker claims for Vancouver Island, regardless of the year of injury.
- Between 2004 and 2008, approximately 209,700 work days were lost for young worker claims in Vancouver Island, regardless of the year of injury.

Young Worker Claim Characteristics – Vancouver Island Overall

Top Accidents in Vancouver Island Region (2004-2008)



Top Injury Types in Vancouver Island Region (2004-2008)

