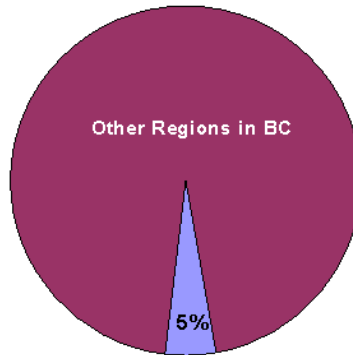
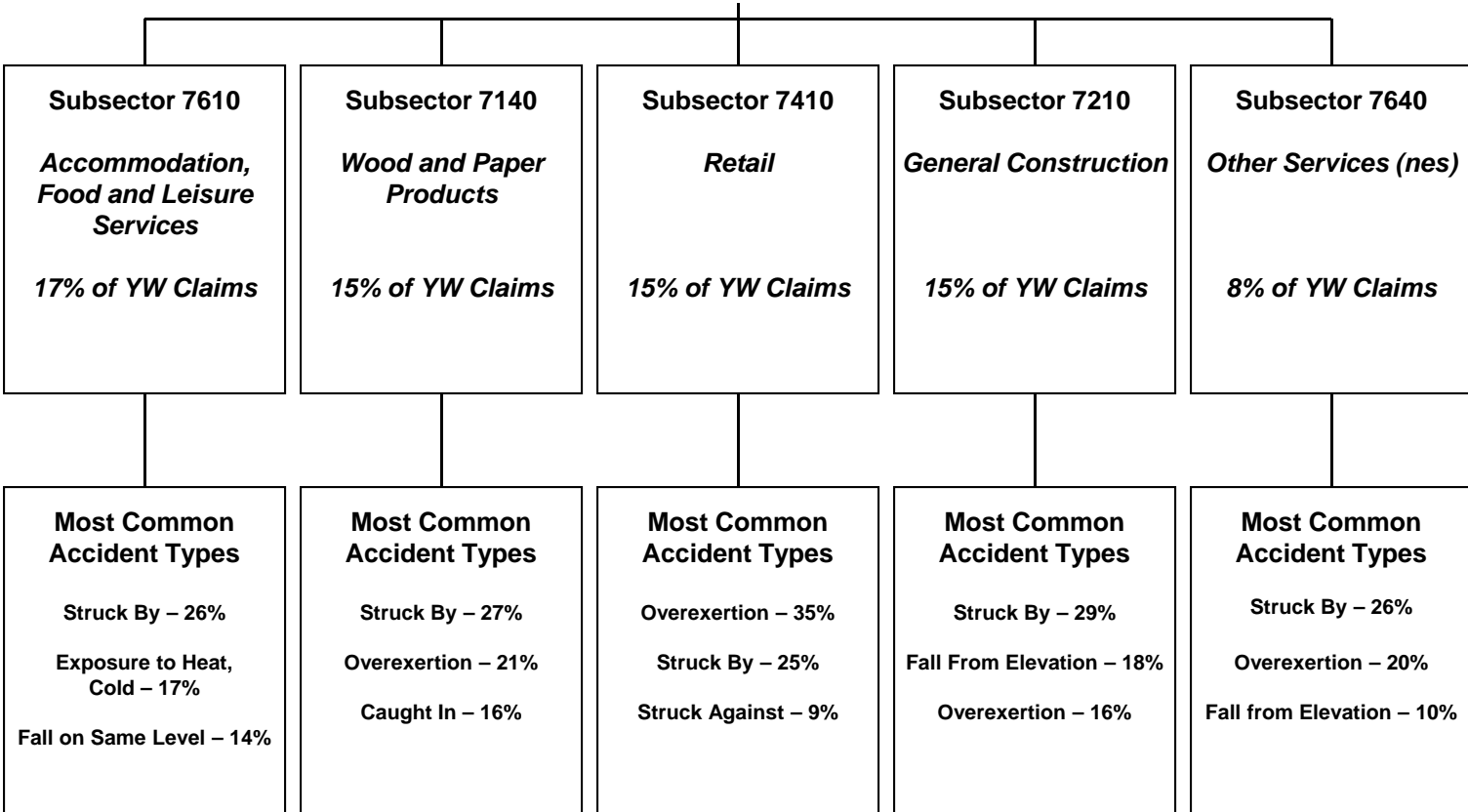


Kamloops

Young Worker (Age 15-24) Claim Hierarchy Tree



Kamloops (2004-2008)
2,462 Young Worker Time-Loss Claims



Within the Most Common Accident Types shown above:

- “Struck By” represents specific accident types that include “Struck by Falling Object” and “Struck by Slipping Handheld Object”, among others.
- “Overexertion” represents specific accident types that include “Overexertion in Lifting” and “Overexertion in Pulling, Pushing Objects”, among others.
- “Caught In” represents specific accident types that include “Caught in, Compressed by Equipment, Objects, NEC” and “Caught in Running Equipment or Machinery”, among others.

Note: Subsectors shown above are the top 5 based on a ranking of young worker time-loss claims volume between 2004 and 2008 for the region.

Kamloops

Young Worker (Age 15-24) Fact Sheet

Young Worker Time-Loss Claims Accepted Between 2004 and 2008 – Kamloops

- In Kamloops, approximately 73% of young worker time-loss claims accepted between 2004 and 2008 relate to males.

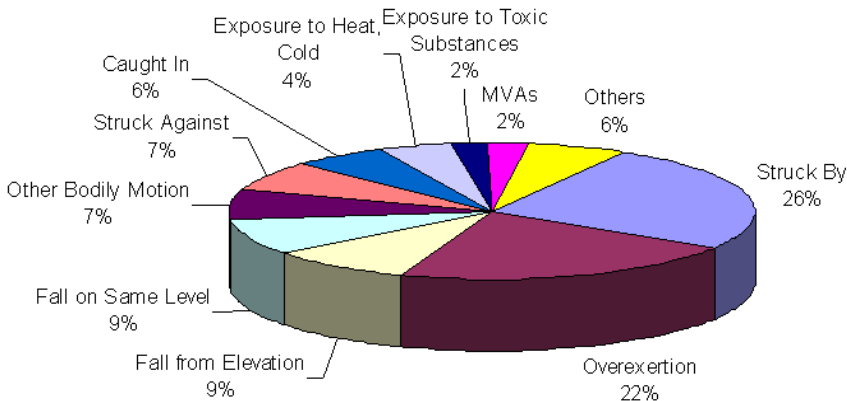
	2004	2005	2006	2007	2008	2004-2008	2004-2008 % of YW for Region
Female - Age 15-24	111	132	134	138	140	655	27%
Male - Age 15-24	332	349	372	406	337	1,796	73%
Unspecified - Age 15-24		1		1	9	11	
Total - Age 15-24	443	482	506	545	486	2,462	100%

Young Worker Claim Costs and Days Lost – Kamloops

- Between 2004 and 2008, approximately \$15,450,000 in claim costs were paid relating to young worker claims for Kamloops, regardless of the year of injury.
- Between 2004 and 2008, approximately 52,500 work days were lost for young worker claims in Kamloops, regardless of the year of injury.

Young Worker Claim Characteristics – Kamloops Overall

Top Accidents in Kamloops Region (2004-2008)



Top Injury Types in Kamloops Region (2004-2008)

