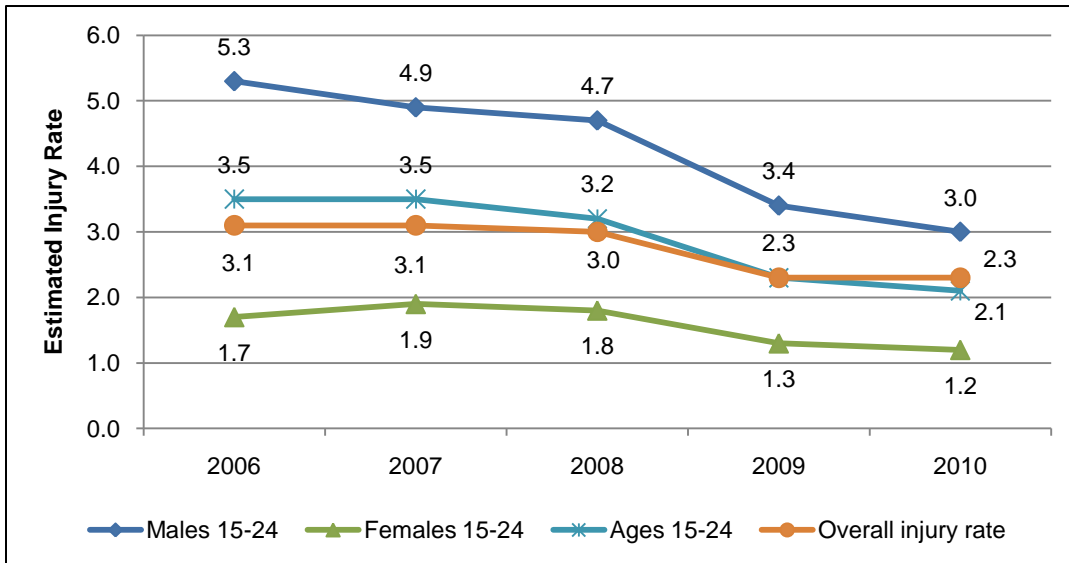


Young Workers in British Columbia – Provincial Overview (2006–2010)

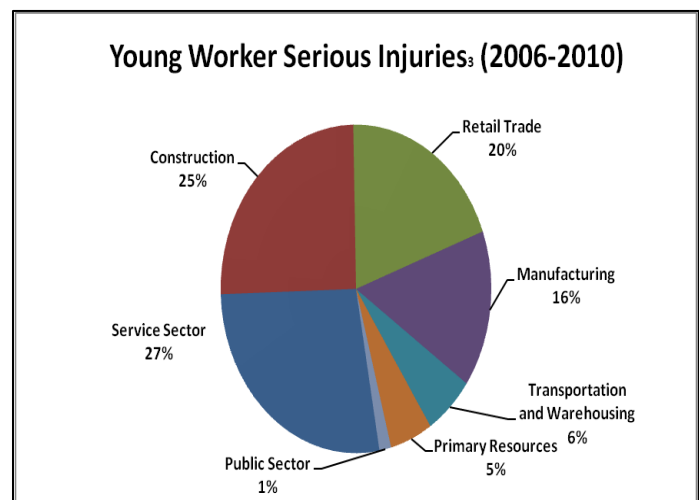
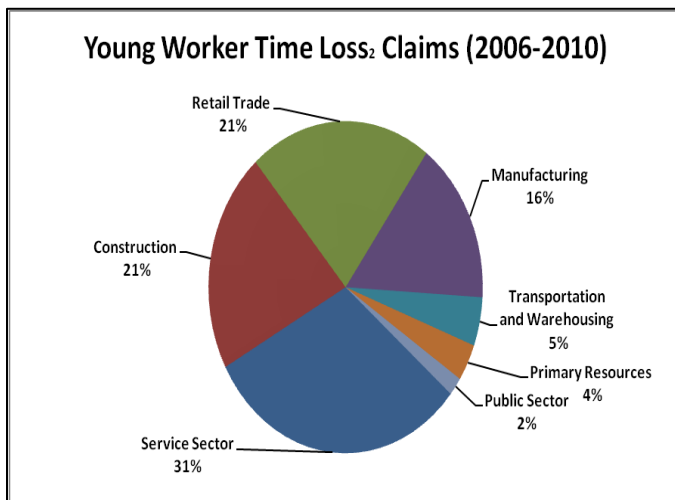
Over the last five years:

- Over 46,000 young workers (15-24 years of age) were injured and had time loss claims. Nearly 10,000 young workers were seriously injured.
- Young worker injuries accounted for 1.2 million work days lost and nearly \$300 million in claim costs for time loss claims.
- There were 27 young worker fatalities due to a workplace injury or disease.
- The young worker injury rate decreased from 3.5 in 2006 to 2.1 in 2010.

Injury Rate Comparison by Age and Gender¹ (2006-2010)



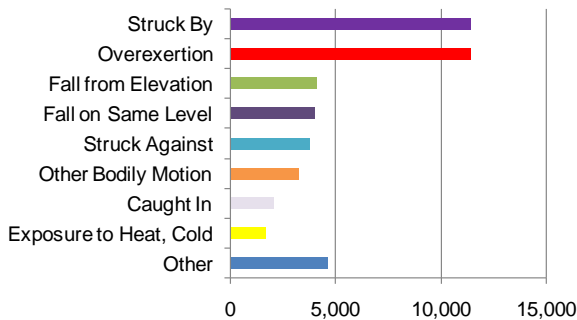
Young Worker Time Loss Claims and Sector (2006-2010)



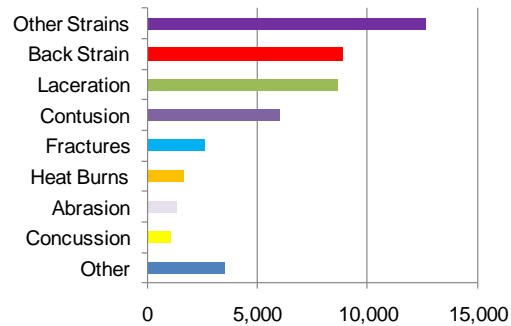
Young Workers in British Columbia – Provincial Overview (2006–2010)

Young Worker Claim Characteristics (2006-2010)

Young Worker Time Loss Claims by Accident Type (2006-2010)



Young Worker Time Loss Claims By Injury Type (2006-2010)



Young Worker Time-Loss Claims By Gender, Region, and Subsector (2006-2010)

Area ⁴	Female	Male	Unknown	Total	%	Top Three Subsectors
Fraser Valley	2,370	7,429	30	9,829	21%	General Construction (23%) Retail (17%) Accommodation, Food, and Leisure Services (13%)
Interior	2,187	5,426	21	7,634	16%	General Construction (20%) Accommodation, Food, and Leisure Services (17%) Retail (16%)
Lower Mainland	4,181	11,803	32	16,016	35%	Accommodation, Food, and Leisure Services (20%) Retail (19%) General Construction (19%)
North	633	1,600	7	2,240	5%	Retail (17%) Accommodation, Food, and Leisure Services (16%) General Construction (12%)
Vancouver Island	2,754	5,568	14	8,336	18%	Retail (22%) General Construction (22%) Accommodation, Food and Leisure Services (18%)
Unknown	553	1,679	7	2,239	5%	
Total	12,678	33,505	111	46,294	100%	

Notes and Definitions

¹The unit for the injury rate statistic is 'number of claims per 100 estimated person years of employment' where the 'number of claims' are those that received short-term disability, long-term disability or survivor benefits either in the year of injury or in the first quarter of the following year. The injury rates for 2010 are preliminary. Because of the way Statistics Canada employment data and WorkSafeBC person years are combined, person years by age gender group are approximate.

²Based on STD/LTD/Fatal claims in ratable sectors accepted from 2006-2010. STD/LTD/FTL Claims represents claims with a first short-term disability, long-term disability or fatal benefit (reserve set or cash award) paid in the period, regardless of the year of injury.

³A Serious Injury is defined as a claim with an STD, LTD, or Fatal benefit payment in the period consisting of the month of injury or the following 3 months that has at least one of the following: 1) 28 or more STD days lost in the period; 2) Healthcare costs in the period equivalent to 28 days of STD costs; 3) a Fatal benefit paid in the period; 4) one of the 275 ICD9 Medical Diagnosis codes assigned which have been designated as Serious Injuries. The Serious Injury Rate is lagged 3 months to allow for the qualifying payments to accrue. The number is unadjusted to reflect uncoded claims at the time of the report.

⁴Areas:

Fraser Valley: Abbotsford; Surrey/Langley

Interior: Cranbrook, Kamloops, Kelowna Nelson

Lower Mainland: Burnaby/New Westminster, Coquitlam, Richmond/Vancouver/Delta, Vancouver Centre/North

North: Fort St. John; Prince George; Terrace

Vancouver Island: Courtenay; Nanaimo; Victoria

Data Source: Business Information and Analysis Data Mart April 2011