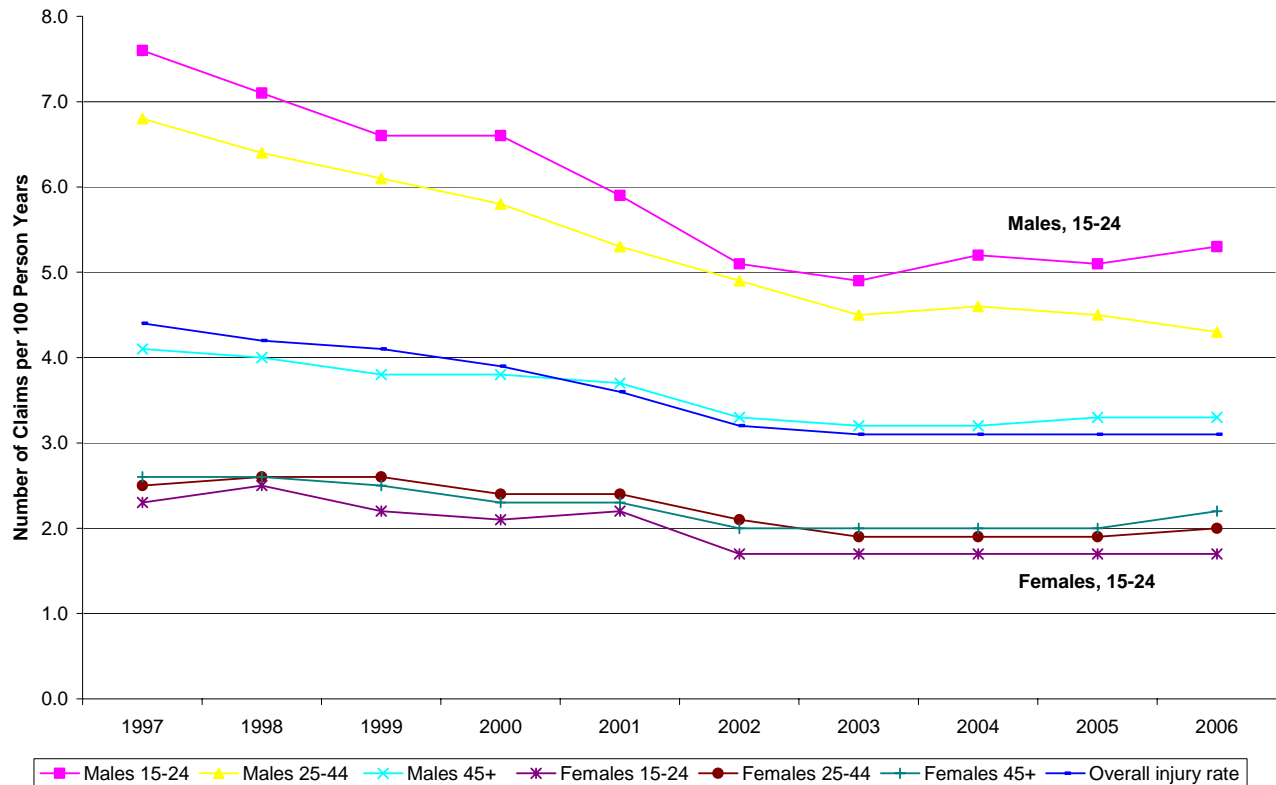


Young Worker (Age 15-24) British Columbia Provincial Overview, 2002–2006

Estimated Injury Rates^{1,2} by Age and Gender Groups, 1997-2006



Young Worker Time-Loss Claims³ by Region and Year, 2002-2006

Region	2002	2003	2004	2005	2006	2002-2006 Total	2002-2006 %
Greater Vancouver ⁴	2,845	2,707	2,820	2,855	2,951	14,178	30%
Fraser Valley ⁵	2,693	2,686	2,779	3,172	3,228	14,558	31%
Vancouver Island ⁶	1,577	1,472	1,605	1,656	1,898	8,208	17%
Interior ⁷	927	928	1,034	1,242	1,410	5,541	11%
Prince George and North ⁸	514	520	538	611	597	2,780	6%
Kamloops ⁹	362	379	445	481	504	2,171	5%
Total	8,918	8,692	9,221	10,017	10,588	47,436	100%

¹The unit for the injury rate statistic is 'number of claims per 100 estimated person years of employment' where the 'number of claims' are those that received short-term disability, long-term disability or survivor benefits either in the year of injury or in the first quarter of the following year.

²Because of the way Statistics Canada employment data and WorkSafeBC person years are combined, person years by age gender group are approximate.

³Based on STD/LTD/Fatal claims accepted from 2002-2006, regardless of the year of injury.

⁴Vancouver, North Vancouver, Burnaby, New Westminster, Richmond, and Delta

⁵Surrey, Langley, Coquitlam, and Abbotsford regions

⁶Victoria, Nanaimo, and Courtenay regions

⁷Kelowna, Nelson, and Cranbrook regions

⁸Prince George, Fort St. John, and Terrace regions

⁹Kamloops

Young Worker Time-Loss Claims Costs and Days Lost¹¹ by Region (2002–2006)

Region	Cost	Days Lost
Greater Vancouver	\$76,345,000	343,530
Fraser Valley	\$59,041,000	314,000
Vancouver Island	\$42,618,000	193,140
Interior	\$31,400,000	124,120
Prince George and North	\$31,958,000	85,140
Kamloops	\$14,987,000	53,560
Total	\$256,349,000	1,113,490

Young Worker Time-Loss Claims by Gender (2002–2006)

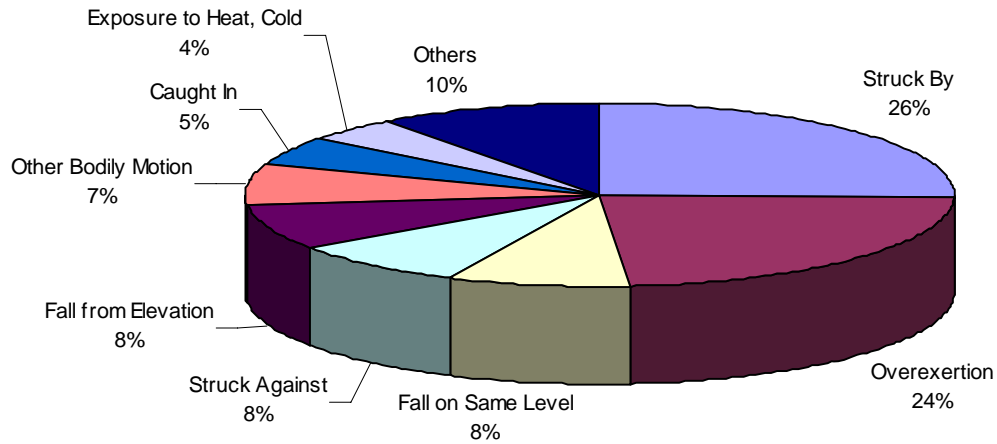
Region	Male	Female
Greater Vancouver	75%	25%
Fraser Valley	77%	23%
Vancouver Island	71%	29%
Interior	75%	25%
Prince George and North	74%	26%
Kamloops	74%	26%
All Regions	75%	25%

Young Worker Time-Loss Claims by Region and Subsector (2002–2006)

	Subsector				
	First	Second	Third	Fourth	Fifth
Greater Vancouver	Accommodation, Food and Leisure Services (21%)	Retail (19%)	General Construction (13%)	Other services (8%)	Transportation and Related Services (7%)
Fraser Valley	Retail (17%)	General Construction (16%)	Accommodation, Food and Leisure Services (14%)	Metal and Non-Metallic Mineral Products (10%)	Wood and Paper Products (9%)
Vancouver Island	Retail (22%)	Accommodation, Food and Leisure Services (22%)	General Construction (17%)	Other services (6%)	Wood and Paper Products (6%)
Interior	Accommodation, Food and Leisure Services (19%)	General Construction (16%)	Retail (16%)	Wood and Paper Products (11%)	Other services (7%)
Prince George & North	Accommodation, Food and Leisure Services (15%)	Retail (14%)	Wood and Paper Products (14%)	General Construction (10%)	Forestry (10%)
Kamloops	Accommodation, Food and Leisure Services (19%)	Wood and Paper products (19%)	Retail (14%)	General Construction (11%)	Other services (8%)

¹¹ Claims costs paid in the year for all claims regardless of the year of injury and days lost in the year for all claims regardless of the year of injury.

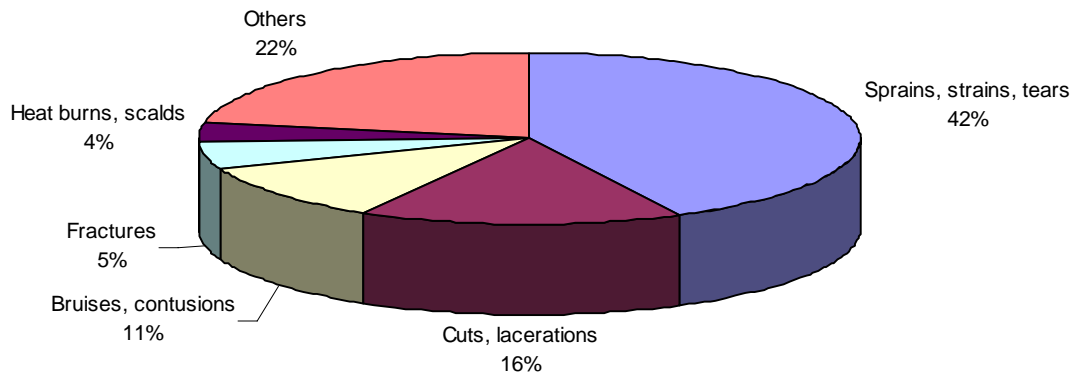
Young Worker Time-Loss Claims by Accident Type (2002–2006) – All BC



Top Three Accident Types by Region (2002-2006)

	Accident Type		
	First	Second	Third
Greater Vancouver	Overexertion (26%)	Struck By (25%)	Fall on Same Level (8%), Fall from Elevation (8%), Struck Against (8%)
Fraser Valley	Struck By (27%)	Overexertion (24%)	Struck Against (9%)
Vancouver Island	Struck By (23%)	Overexertion (24%)	Fall on Same Level (9%), Struck Against (9%)
Interior	Struck By (26%)	Overexertion (23%)	Fall from Elevation (9%)
Kamloops	Struck By (27%)	Overexertion (20%)	Fall on Same Level (9%)
Prince George & North	Struck By (23%)	Overexertion (19%)	Fall on Same Level (9%)

Young Worker Time-Loss Claims by Injury Type (2002–2006) – All BC



Top Three Injury Types by Region (2002–2006)

	Sprains, strains, tears	Cuts, lacerations	Bruises, contusions
Greater Vancouver	45%	15%	12%
Fraser Valley	41%	17%	11%
Vancouver Island	43%	16%	9%
Interior	41%	14%	10%
Kamloops	39%	16%	11%
Prince George & North	38%	13%	11%

Young Worker Serious Injuries¹² (2002-2006)

- There were 738 serious injuries for young workers from 2002–2006
- The most common serious injuries include major fractures (48%) and amputations (41%)

The Classification Units with the highest number of serious injury claims accepted in this period include:

- Restaurant, or other dining establishment
- House, or other Wood Frame Construction
- Wooden component manufacture
- Sawmills

¹² Serious injuries include claims with the STD/LTD/FTL year between 2002 and 2006, regardless of year of injury, and are based on a list of 165 ICD9 Medical Diagnosis codes used to identify serious injury claims that include major fractures (e.g. skull, spine, pelvis, multiple fractures, etc.), amputations, 3rd degree burns, serious eye injuries, and other serious spinal, head or crushing injuries. Serious injuries exclude fatalities, and the serious injury claim count is adjusted to include an estimate for uncoded claims.