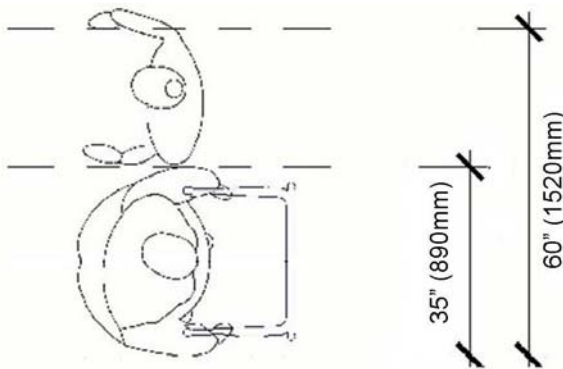


# Design Guidelines For Facilities With Bariatric Patients

The design of healthcare facilities has a direct impact on both worker safety and the quality of patient care. With an increasing number of bariatric patients (patients 100lb or more over their ideal body weight or having a Body Mass Index of 40 or more), designing or re-designing facilities is an emerging topic. The following guidelines are some basic numbers based on research by the American Institute of Architecture Academy for Health. It is important to note when applying these numbers into a design that there are many other considerations that need to be taken into account, such as:

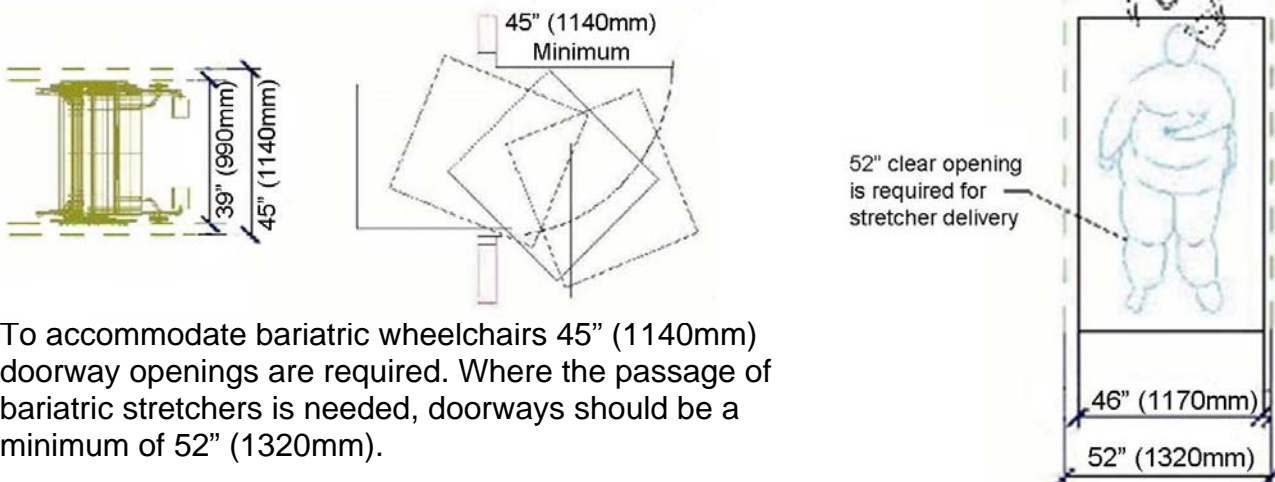
- A description of the patient population – physical and mental capacities, medical conditions;
- The types of procedures being performed and what equipment is required;
- How and where patients are transported (patient flow);
- Dimensions and storage of equipment.

## Corridor Widths



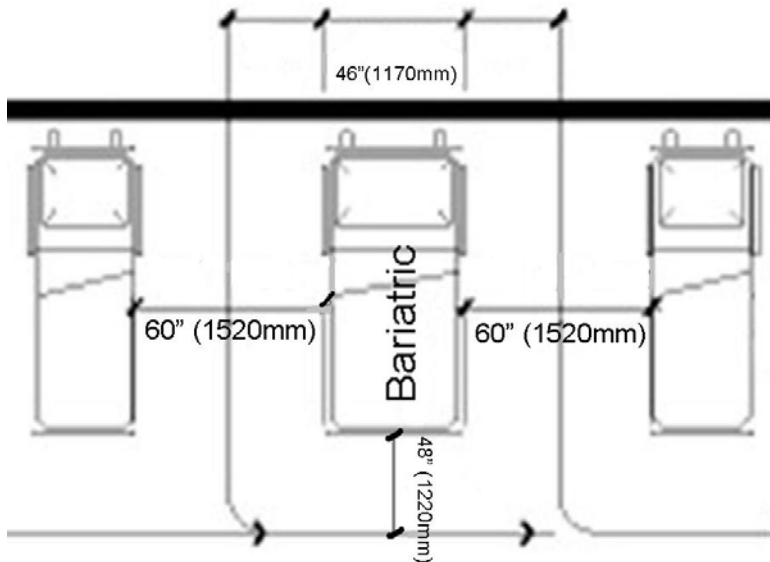
In order to accommodate a patient with a bariatric walker and allow passage for other foot traffic, a minimum of 5ft (60" or 1520mm) is required for the width of a corridor.

## Doorway Widths



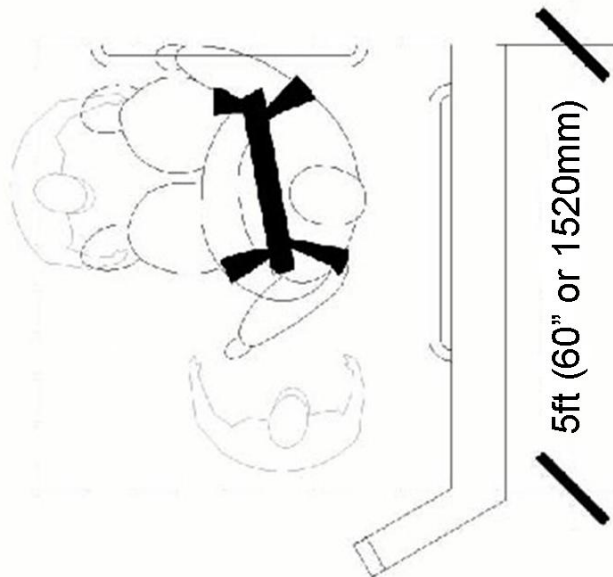
To accommodate bariatric wheelchairs 45" (1140mm) doorway openings are required. Where the passage of bariatric stretchers is needed, doorways should be a minimum of 52" (1320mm).

## Room Sizes



In order to accommodate the larger equipment needed for bariatric patients, the design shall provide a minimum of 80ft<sup>2</sup> (7.43m<sup>2</sup>) for each patient bed, and for clearance of at least 5 ft (60" or 1520mm) between patient beds and 4ft (48" or 1220mm) at the foot of the bed.

## Toilet Rooms



Provide floor-mounted toilets with a drop weight rating of 700lbs (to accommodate an impact factor of 1.4 for a 500lb patient) and a clearance of 5ft (60" or 1520mm). Allow for staff assistance on two sides of the toilet or shower.

Provide wall-mounted sinks with a rating of 300lbs (floor mounted sinks interfere with wheelchairs).

Opt for open showers with a floor drain to allow for easier staff assistance and provide wall-mounted grab bars. Ensure any wall with a wall-mounted fixture is re-enforced to meet or exceed the rating.

Source: *The American Institute of Architects. (2004). Planning and Design Guidelines for Bariatric Healthcare Facilities. Found online at: [http://www.aia.org/nwsltr\\_print.cfm?pagename=aah\\_jrnl\\_20061018\\_award\\_winner](http://www.aia.org/nwsltr_print.cfm?pagename=aah_jrnl_20061018_award_winner)*

Created: Spring 2008