

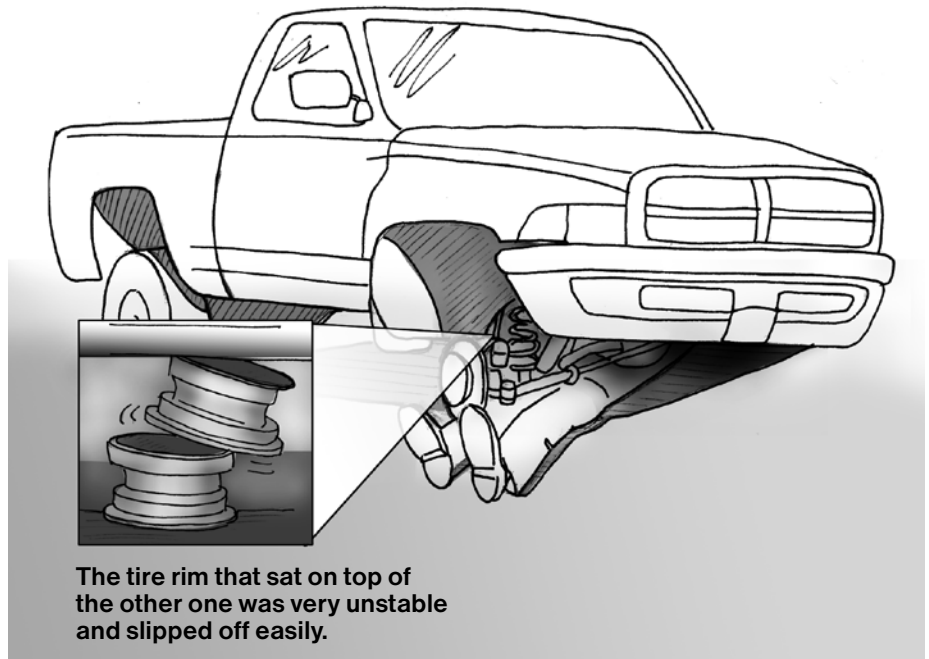


## Worker fatally injured under pickup truck

In the yard of an automotive recycling facility, a worker was under a pickup truck to remove a part. The pickup truck was raised off the ground on two aluminum tire rims placed under the cross-member, just behind the front axle. The rims had been stacked horizontally one on top of the other. While the worker was still under the truck, the top rim shifted, causing the truck to roll forward. The truck then dropped off the edge of the rim, pinning the worker. The worker died as a result.

### Safe work practices:

- Avoid working under an elevated vehicle or vehicle part whenever possible.
- Ensure that an elevated vehicle or vehicle part is securely blocked – from both the driver and passenger sides as necessary – to prevent it from falling. Also make sure that the wheels are securely chocked to prevent rolling.
- Perform a stability check on a blocked and elevated vehicle or vehicle part before working under it to ensure it won't shift inadvertently.
- Develop and enforce written safe work procedures for securing and for working under elevated vehicles and vehicle parts. Ensure that only automotive lifting devices or supports that meet the required standards are used.



*Portable automotive lifting devices and vehicle supports – including stands made from welded wheel rims – must meet the requirements of ANSI Standard ASME PALD-2003, Safety Standard for Portable Automotive Lifting Devices.*

## **Relevant sections of the Occupational Health and Safety Regulation\***

### **Workplace Inspections**

#### **3.5 General requirement**

Every employer must ensure that regular inspections are made of all workplaces, including buildings, structures, grounds, excavations, tools, equipment, machinery and work methods and practices, at intervals that will prevent the development of unsafe working conditions.

### **Buildings, Structures, Equipment and Site Conditions**

#### **4.3 Safe machinery and equipment**

- (1) The employer must ensure that each tool, machine and piece of equipment in the workplace is
  - (a) capable of safely performing the functions for which it is used, and
  - (b) selected, used and operated in accordance with
    - (i) the manufacturer's instructions, if available,
    - (ii) safe work practices, and
    - (iii) the requirements of this Regulation.

### **Automotive Lifts and Other Vehicle Supports**

#### **12.74 Standards**

- (3) Portable automotive lifting devices and vehicle supports must meet the requirements of the applicable section of *ANSI Standard ASME PALD-2003, Safety Standard for Portable Automotive Lifting Devices*.

### **Operating Requirements**

#### **16.37 Securing elevated loads**

- (2) If a worker is required to work beneath an elevated part of mobile equipment, the elevated part must be securely blocked.

## **Relevant sections of the Workers Compensation Act\***

### **General duties of employers**

115 (2) Without limiting subsection (1), an employer must

...

- (c) establish occupational health and safety policies and programs in accordance with the regulations,
- (d) provide and maintain in good condition protective equipment, devices and clothing as required by regulation and ensure that these are used by the employer's workers,
- (e) provide to the employer's workers the information, instruction, training and supervision necessary to ensure the health and safety of those workers in carrying out their work and to ensure the health and safety of other workers at the workplace . . .

---

\* The sections of the *Workers Compensation Act* and the Occupational Health and Safety Regulation listed in this hazard alert do not imply a breach of the Regulation on the part of any party that may have been involved in this incident. The purpose in listing specific sections of the Regulation is to make readers aware of some of the applicable sections of the Regulation.