

Name _____

Date _____

The Hearing Video Discussion Questions

A.

Hearing damage from hazardous noise is permanent.

Agree

Disagree

Observations:

B.

Noise hazard depends on the loudness of the sound and the length (time) of exposure.

Agree

Disagree

Observations:

C.

Rule of thumb: at arm's length, if you have to speak loudly for someone to hear you over noise/music it could be at hazardous loudness levels.

Agree

Disagree

Observations:

D.

There are many types of hearing protection to choose from; to protect your hearing you need to make sure hearing protection devices fit you and are used properly and consistently.

Agree

Disagree

Observations:

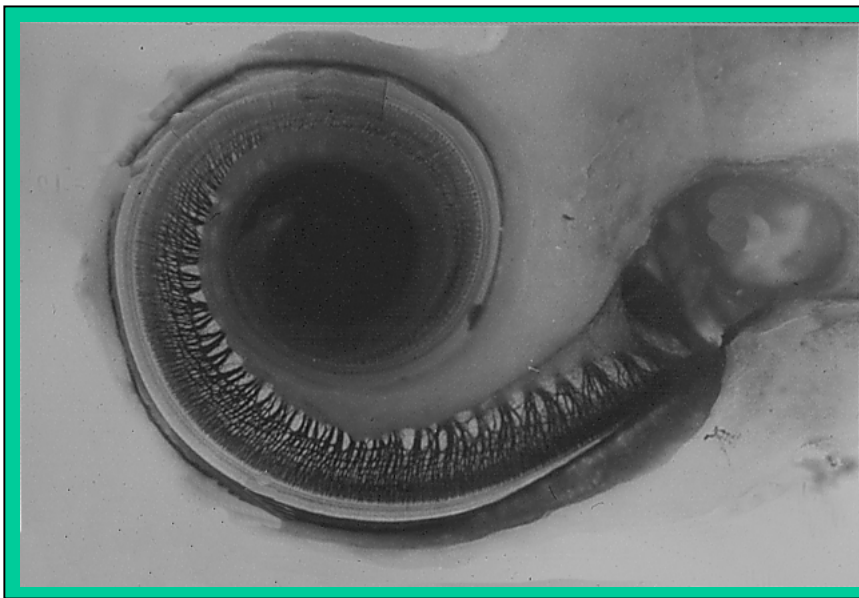
Inner Ear Photos

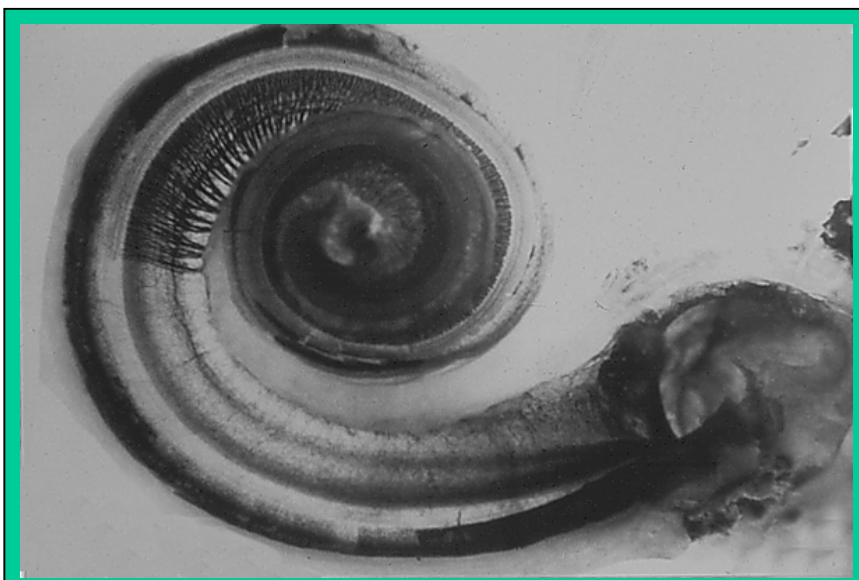
Directions:

Compare the photos below. They are of pictures of two cochleae (inner ear). One cochlea is normal. One is damaged.

Question:

1. What is the difference between the photos?
2. Which photo shows the damaged cochlea? What do you think caused the damage?





Courtesy of National Hearing Conservation Association.
Photomicrographs provided by Dr. Joseph E. Hawkins jr.,
Kresge Hearing Research Institute, University of Michigan.

Name _____

Date _____

The Walkman Generation Viewing Guide

A. What are some sounds that could be a hazard to your hearing?

Observations:

B. What are some signs that your hearing is being damaged?

Observations:

C. How does noise damage your ears?

Observations:

D. How can you protect your hearing from hazardous noise?

Observations: